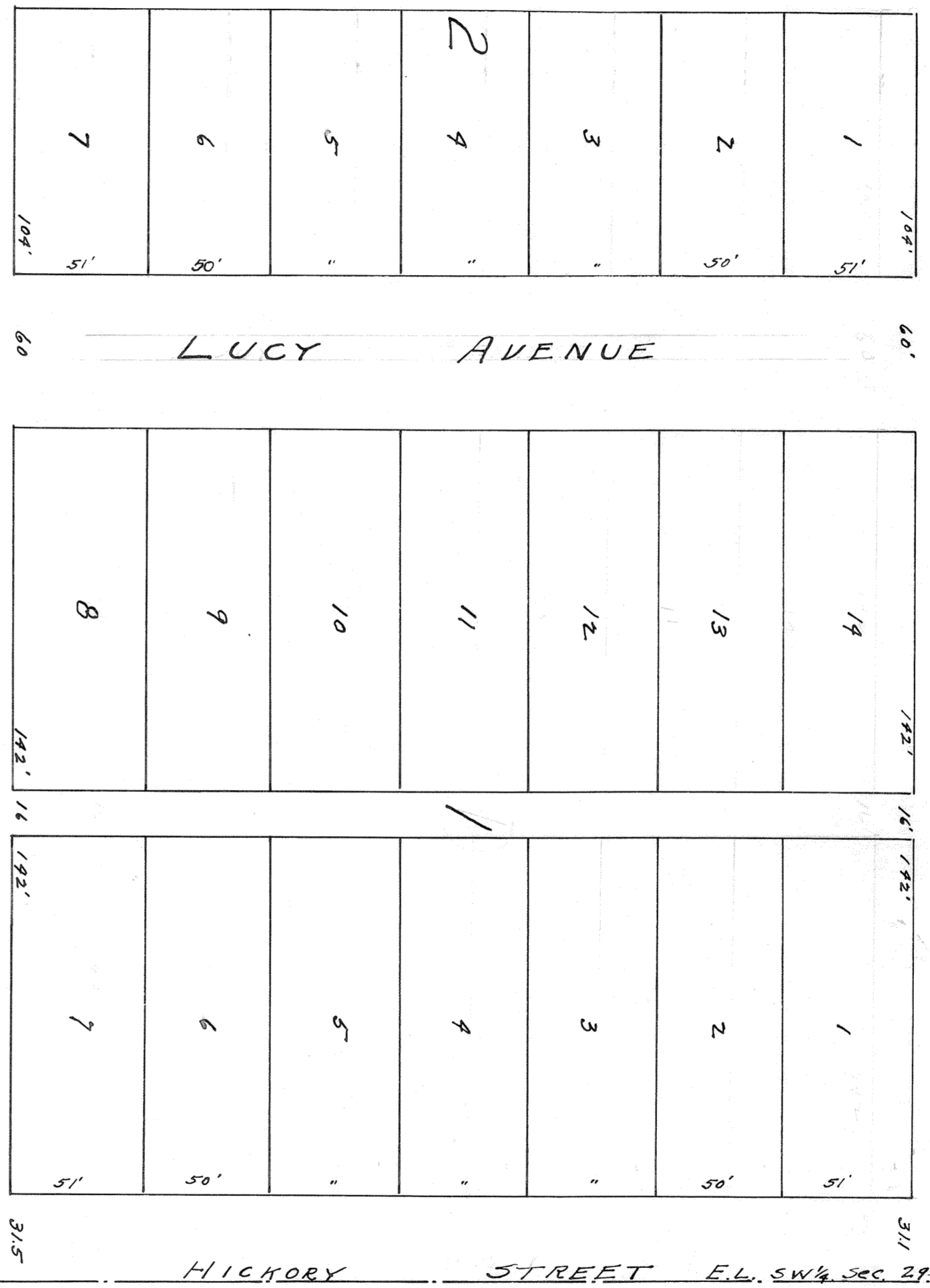


HEDGES' REPLAT

MCPHERSON KANSAS

North Line of S¹/₄ SW¹/₄ Sec. 29-19-3
 GRANT STREET



State of Kansas ss.
 County of McPherson ss.

I, G.D. Johnson a civil engineer of said state and county, do hereby certify that I have surveyed and platted Hedges' Replat in the City of McPherson, Kansas. Said property, being Block No. 1 of Simpson's Addition to the City of McPherson, Kansas, is subdivided into lots, street and alley of dimensions shown on accompanying plat which is a true exhibit of said survey.

Know All Men By These Presents, that we the undersigned W.D. Hedges and Mary C. Hedges, his wife Civil Engineer are the owners of the property described in the engineers Certificate and that the same has been surveyed and platted according to our instructions. The lots are to be of dimensions as shown, street and alley of dimensions shown are dedicated to the use of the public.

W.D. Hedges
Mary C. Hedges

State of Kansas ss.
 County of McPherson ss.

Be It Remembered, that on this the 20th day of October 1938, before me came W.A. Hedges and Mary C. Hedges, his wife, who are personally known to me to be the same persons who executed this instrument of writing and such persons duly acknowledge the execution of the same last above written in Testimony Whereof, I have herewith set my hand and affixed my seal the day and year

George M. Schumberg Notary Public.

Recommended for Approval by
 Planning Commission of
 The City of McPherson, Kansas.

Approved By W.D. Hedges Chairman
W.C. Hedges Secretary

The City of McPherson, Kansas.

Approved By W.A. Hedges Mayor
W.A. Hedges Commissioner

Approved By W.A. Hedges City Attorney

Filed on the 21st day of December 1938. At 1⁵⁵ P. M.
W.C. Hedges Register of Deeds.

Position # 79-15
 Price 226, Page 418